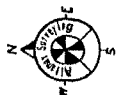
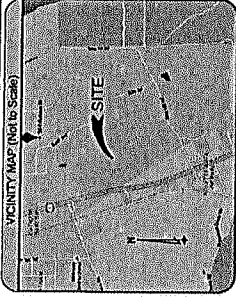


# BOUNDARY SURVEY



## GENERAL SURVEY NOTES:

1. BEARING STRUCTURE BASED ON THE UNMAGNETED EAST LINE OF THE S. 1/4, SECTION 8-19-35, RANGE 20E, TOWNSHIP 35N, COUNTY OF WISCONSIN.
2. THE SURVEY WAS CONDUCTED ON THE DATE INDICATED ON THE TITLE AND THE SURVEYOR'S FIELD NOTES.
3. THE SURVEYOR HAS REVIEWED ALL RECORDS ON FILE AT THE LAND RECORDS OFFICE IN MADISON, WISCONSIN, AND HAS DETERMINED THAT NO OTHER SURVEYS OF THIS PROPERTY HAVE BEEN RECORDED SINCE THE DATE OF THE PREVIOUS SURVEY.
4. THE SURVEYOR HAS REVIEWED ALL RECORDS ON FILE AT THE LAND RECORDS OFFICE IN MADISON, WISCONSIN, AND HAS DETERMINED THAT NO OTHER SURVEYS OF THIS PROPERTY HAVE BEEN RECORDED SINCE THE DATE OF THE PREVIOUS SURVEY.
5. THE SURVEYOR HAS REVIEWED ALL RECORDS ON FILE AT THE LAND RECORDS OFFICE IN MADISON, WISCONSIN, AND HAS DETERMINED THAT NO OTHER SURVEYS OF THIS PROPERTY HAVE BEEN RECORDED SINCE THE DATE OF THE PREVIOUS SURVEY.



## LEGEND:

- 1. Survey Boundary
- 2. Property Line
- 3. Easement
- 4. Right-of-Way
- 5. Unimproved Land
- 6. Improved Land
- 7. Road
- 8. Water
- 9. Other

## DESCRIPTION:

This survey was conducted by the undersigned, a duly licensed Professional Surveyor, on the 15th day of February, 2010, at the premises located in the Township of North, Range 20E, Township 35N, County of Waushara, Wisconsin.

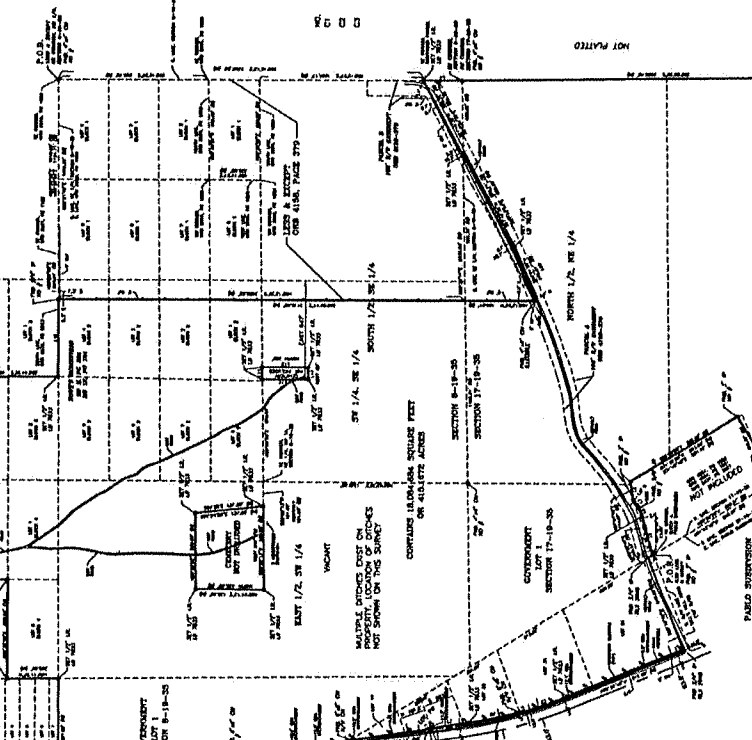
The survey was conducted in accordance with the provisions of the Wisconsin Statutes, Chapter 191, and the rules and regulations of the Board of Surveying and Mapping, Wisconsin Department of Transportation.

The survey was conducted on the following premises:

- Section 8-19-35, Range 20E, Township 35N, County of Waushara, Wisconsin.
- Section 17-19-35, Range 20E, Township 35N, County of Waushara, Wisconsin.
- Section 26-19-35, Range 20E, Township 35N, County of Waushara, Wisconsin.
- Section 35-19-35, Range 20E, Township 35N, County of Waushara, Wisconsin.

The survey was conducted in accordance with the provisions of the Wisconsin Statutes, Chapter 191, and the rules and regulations of the Board of Surveying and Mapping, Wisconsin Department of Transportation.

AREA	ACRES	FEET	INCHES
1	2.13	31.4	31.4
2	2.13	31.4	31.4
3	2.13	31.4	31.4
4	2.13	31.4	31.4
5	2.13	31.4	31.4
6	2.13	31.4	31.4
7	2.13	31.4	31.4
8	2.13	31.4	31.4
9	2.13	31.4	31.4
10	2.13	31.4	31.4
11	2.13	31.4	31.4
12	2.13	31.4	31.4
13	2.13	31.4	31.4
14	2.13	31.4	31.4
15	2.13	31.4	31.4
16	2.13	31.4	31.4
17	2.13	31.4	31.4
18	2.13	31.4	31.4
19	2.13	31.4	31.4
20	2.13	31.4	31.4
21	2.13	31.4	31.4
22	2.13	31.4	31.4
23	2.13	31.4	31.4
24	2.13	31.4	31.4
25	2.13	31.4	31.4
26	2.13	31.4	31.4
27	2.13	31.4	31.4
28	2.13	31.4	31.4
29	2.13	31.4	31.4
30	2.13	31.4	31.4
31	2.13	31.4	31.4
32	2.13	31.4	31.4
33	2.13	31.4	31.4
34	2.13	31.4	31.4
35	2.13	31.4	31.4
36	2.13	31.4	31.4
37	2.13	31.4	31.4
38	2.13	31.4	31.4
39	2.13	31.4	31.4
40	2.13	31.4	31.4
41	2.13	31.4	31.4
42	2.13	31.4	31.4
43	2.13	31.4	31.4
44	2.13	31.4	31.4
45	2.13	31.4	31.4
46	2.13	31.4	31.4
47	2.13	31.4	31.4
48	2.13	31.4	31.4
49	2.13	31.4	31.4
50	2.13	31.4	31.4



U.S. HIGHWAY NO. 1 (STATE ROAD NO. 1)  
(PUBLIC R/W WITH WAIVES)

CONVEYANCE LOT 1 SECTION 8-19-35

CONVEYANCE LOT 1 SECTION 17-19-35

CONVEYANCE LOT 1 SECTION 26-19-35

CONVEYANCE LOT 1 SECTION 35-19-35

PAULO JOHNSON  
188 S. 1<sup>ST</sup>

NOT PLATTED

NOT PLATTED

**Altamex Surveying**  
1910  
1910  
1910  
1910  
1910  
1910

Robert C. Johnson PLS 5581  
SHEET 1 OF 1

Prepared for:  
**Oak Hill Partnership Management**  
c/o Nova Property Management



Altamex Surveying  
1910  
1910  
1910  
1910  
1910  
1910